

# Comprehensive Women's Health Center at Saint Francis

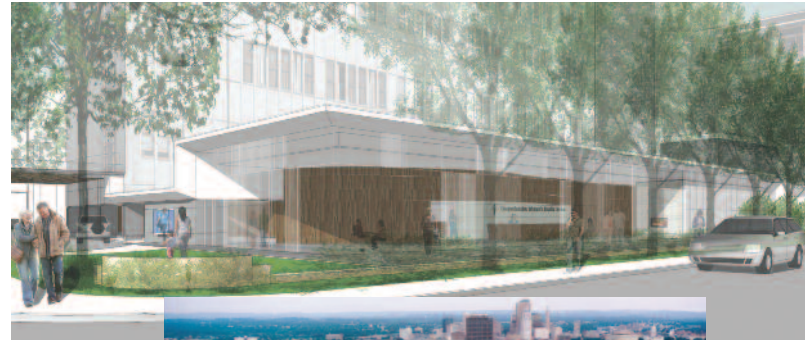


*A healthcare facility that inspires health, healing and community.*

## The Comprehensive Women's Health Center at Saint Francis,

located in the former Emergency Department, will be the nation's most advanced state-of-the-art facility providing the very best healthcare for women — care that focuses on the whole woman in an environment that is architecturally designed to promote health and healing.

At Saint Francis we know how complex women's lives can be. That is why we have brought together the services of the Comprehensive Breast Health Center, the Phillips Women's Heart Program, Gynecologic Services including ultrasound and bone densitometry, and the Integrative Medicine Department. By bringing these services together we are able to provide an opportunity for women to schedule a variety of appointments in a single day. This multi-disciplinary approach allows us to address the diverse and unique health and wellness needs of all women in a comprehensive manner.



The new home of the Comprehensive Women's Health Center at Saint Francis is conveniently located at the former site of the Hospital's Emergency Department.

## At the Comprehensive Women's Health Center we offer:

- > World-class physicians
- > Highly-trained nurses and technicians
- > Innovative state-of-the-art technologies
- > Education, Prevention, Diagnosis and Treatment  
in a women-centered environment

The Center is Saint Francis' way of bringing together physicians, treatments, and the resources necessary to treat the whole woman. This unique environment will be able to offer the kind of sensitivity that only a caring staff can provide.

At the core of the Center is our commitment to making a positive difference in the lives of the women in our community. Every physician, every nurse and every employee is here because they want to practice extraordinary medicine in an extraordinary place with extraordinary people. It's with this vision and passion for care that we have developed this unique Women's Center.





*Kristen Zarfos, MD, Medical Director,  
Comprehensive Breast Health Center*

## **Comprehensive Breast Health Center**

Within the new Comprehensive Women's Health Center, the Comprehensive Breast Health Center will be able to improve and expand the comprehensive healthcare presently provided. Our commitment is to provide patient-focused, multidisciplinary and coordinated care, timely (and in most cases) same day mammogram results and state-of-the-art technology in a welcoming setting where we care for all women.



## **Phillips Women's Heart Program**

In the new Comprehensive Women's Health Center, the Phillips Women's Heart Program will provide cardiac risk assessment, education and diagnostic testing. Immediate appointments and referrals will be made within the Comprehensive Women's Health Center from other staff as well as to primary care providers in the community. All this will be available, in addition to the current primary prevention programs.

*Anita Kelsey, MD, Director, Echocardiography  
and Director, Phillips Women's Heart Program*

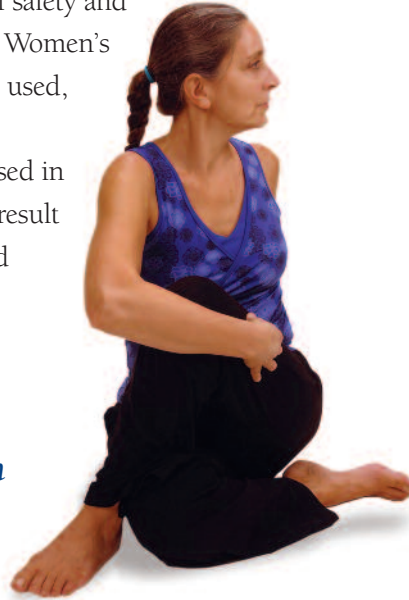


*Delivering care in the context of women's lives*

## Integrative Medicine

Integrative medicine is a combination of mainstream medical therapies and complementary and alternative therapies for which there is high-quality scientific evidence of safety and effectiveness. Within the Comprehensive Women's Health Center, yoga and acupuncture are used, along with other relaxation techniques. Integrative medicine techniques, when used in those preparing for surgery and healing, result in a reduction in pain medication use and earlier discharge for surgical patients.

*“Women want a holistic approach to care that focuses on prevention...that focuses on all aspects of their lives.”*



**Specialists in menopause, pelvic floor disorders and osteoporosis will offer services in the Comprehensive Women's Health Center to provide integrated care in a state-of-the-art facility.**

# Naming Opportunities

You, our donors, are our partners and together we can provide the highest quality care for those we serve. We consider it an honor to offer naming opportunities for our most generous donors and are pleased to have their names permanently associated with Saint Francis and the Comprehensive Women's Health Center.

In appreciation of these gifts, Saint Francis provides a variety of naming opportunities that reflect the Comprehensive Women's Health Center's aspirations to offer compassionate and unparalleled medical care.

We want to work together with you to design a unique naming opportunity.

There are a number of very special spaces in the Center that may be named in honor or memory of a loved one. A naming opportunity, funded by an individual, family, foundation, or corporation, can include a one-time gift, a multi-year pledge, a gift of stock, or a bequest.

Donor names will be prominently and visibly displayed and will serve as a focal point upon entry to the Comprehensive Women's Health Center.



*Making a Difference in Women's Lives*

## Individual Gifts

Gifts from individuals, couples and families to the Comprehensive Women's Health Center will enable Saint Francis to provide outstanding health and wellness care in a women-centered environment.

## Foundation and Corporate Gifts

Gifts from foundations and corporations play a significant role to ensure that all women will be treated with dignity and respect in a facility architecturally designed for health and healing.

## Giving Circles

Our Giving Circles have been designed to offer an opportunity for individuals to give collectively in order to attain a naming opportunity. Friends, family, neighbors and colleagues can join together to show their full support for our community. To learn more about our Giving Circles, please contact the Foundation.

*We look forward to speaking with you about the Comprehensive Women's Health Center at Saint Francis and we request your consideration of support.*



Comprehensive Women's Health Center . . . . .	\$5,000,000
Welcoming Pavilion . . . . .	\$1,500,000
Gowned Waiting Area . . . . .	\$1,000,000
Breast Center Suite . . . . .	\$750,000
Integrative Medicine Center . . . . .	\$750,000
Phillips Women's Heart Suite . . . . .	\$500,000
Gynecology Suite . . . . .	\$500,000
Reception Desk . . . . .	\$250,000
Imaging Suites . . . . .	\$250,000
Flexible Suites . . . . .	\$250,000
Healing Garden . . . . .	\$250,000
Meditation Corner(s) . . . . .	\$100,000
Fireside Corner . . . . .	\$100,000
Life-long Learning Center . . . . .	\$100,000
Personal Welcome Stations . . . . .	\$100,000

*Please contact the Foundation at 860-714-4900 or [foundation@stfranciscare.org](mailto:foundation@stfranciscare.org)*



### *Our Mission*

We are committed to health and healing through excellence, compassionate care and reverence for the spirituality of each person.



Saint Francis Hospital and Medical Center • 114 Woodland Street • Hartford, CT 06105-1299

[www.stfranciscare.com](http://www.stfranciscare.com)